

Summary Background

WORKFORCE DEVELOPMENT

Distance/Direction Analysis

Workers: Employed in East Feliciana Parish, LA

Showing: Residential locations

Job Counts in Home Blocks by Distance Only

	2021		2020		2019	
	Count	Share	Count	Share	Count	Share
Total All Jobs	4,611	100.0%	4,822	100.0%	4,905	100.0%
Less than 10 miles	1,254	27.2%	1,303	27.0%	1,424	29.0%
10 to 24 miles	1,771	38.4%	1,902	39.4%	1,891	38.6%
25 to 50 miles	905	19.6%	911	18.9%	891	18.2%
Greater than 50 miles	681	14.8%	706	14.6%	699	14.3%

Job Counts in Home Blocks to the North of Work Blocks by Distance

	2021		2020		2019	
	Count	Share	Count	Share	Count	Share
Total All Jobs	333	100.0%	367	100.0%	348	100.0%
Less than 10 miles	129	38.7%	147	40.1%	145	41.7%
10 to 24 miles	94	28.2%	116	31.6%	111	31.9%
25 to 50 miles	67	20.1%	62	16.9%	41	11.8%

Greater than 50 miles	43	12.9%	42	11.4%	51	14.7%
-----------------------	----	-------	----	-------	----	-------

Job Counts in Home Blocks to the Northeast of Work Blocks by Distance

	2021		2020		2019	
	Count	Share	Count	Share	Count	Share
Total All Jobs	432	100.0%	440	100.0%	432	100.0%
Less than 10 miles	140	32.4%	142	32.3%	147	34.0%
10 to 24 miles	142	32.9%	150	34.1%	132	30.6%
25 to 50 miles	85	19.7%	86	19.5%	86	19.9%
Greater than 50 miles	65	15.0%	62	14.1%	67	15.5%

Job Counts in Home Blocks to the East of Work Blocks by Distance

	2021		2020		2019	
	Count	Share	Count	Share	Count	Share
Total All Jobs	519	100.0%	513	100.0%	543	100.0%
Less than 10 miles	214	41.2%	184	35.9%	221	40.7%
10 to 24 miles	175	33.7%	170	33.1%	178	32.8%
25 to 50 miles	86	16.6%	94	18.3%	106	19.5%
Greater than 50 miles	44	8.5%	65	12.7%	38	7.0%

Job Counts in Home Blocks to the Southeast of Work Blocks by Distance

	2021		2020		2019	
	Count	Share	Count	Share	Count	Share

Total All Jobs	769	100.0%	675	100.0%	689	100.0%
Less than 10 miles	187	24.3%	169	25.0%	188	27.3%
10 to 24 miles	230	29.9%	215	31.9%	237	34.4%
25 to 50 miles	235	30.6%	185	27.4%	170	24.7%
Greater than 50 miles	117	15.2%	106	15.7%	94	13.6%

Job Counts in Home Blocks to the South of Work Blocks by Distance

	2021		2020		2019	
	Count	Share	Count	Share	Count	Share
Total All Jobs	1,203	100.0%	1,309	100.0%	1,352	100.0%
Less than 10 miles	169	14.0%	199	15.2%	239	17.7%
10 to 24 miles	631	52.5%	669	51.1%	675	49.9%
25 to 50 miles	361	30.0%	414	31.6%	406	30.0%
Greater than 50 miles	42	3.5%	27	2.1%	32	2.4%

Job Counts in Home Blocks to the Southwest of Work Blocks by Distance

	2021		2020		2019	
	Count	Share	Count	Share	Count	Share
Total All Jobs	414	100.0%	490	100.0%	453	100.0%
Less than 10 miles	107	25.8%	127	25.9%	122	26.9%
10 to 24 miles	207	50.0%	235	48.0%	227	50.1%

25 to 50 miles	34	8.2%	44	9.0%	34	7.5%
Greater than 50 miles	66	15.9%	84	17.1%	70	15.5%

Job Counts in Home Blocks to the West of Work Blocks by Distance

	2021		2020		2019	
	Count	Share	Count	Share	Count	Share
Total All Jobs	477	100.0%	543	100.0%	572	100.0%
Less than 10 miles	159	33.3%	171	31.5%	180	31.5%
10 to 24 miles	201	42.1%	251	46.2%	223	39.0%
25 to 50 miles	20	4.2%	14	2.6%	31	5.4%
Greater than 50 miles	97	20.3%	107	19.7%	138	24.1%

Job Counts in Home Blocks to the Northwest of Work Blocks by Distance

	2021		2020		2019	
	Count	Share	Count	Share	Count	Share
Total All Jobs	464	100.0%	485	100.0%	516	100.0%
Less than 10 miles	149	32.1%	164	33.8%	182	35.3%
10 to 24 miles	91	19.6%	96	19.8%	108	20.9%
25 to 50 miles	17	3.7%	12	2.5%	17	3.3%
Greater than 50 miles	207	44.6%	213	43.9%	209	40.5%



Total Population

1,028,155

Capital Region



Unemployment Rate

6.52%

Capital Region



High School Graduate or Higher

87.89%

Capital Region



Civilian Labor Force

147,805

Capital Region

- [Demographics](#)
- [Where We Work](#)
- [Jobs & Housing](#)
- [Industry Clusters](#)
- [Expanding Our Base](#)
- [Infrastructure & Job Centers](#)
- [Broadband](#)

DEMOGRAPHICS & HUMAN CAPITAL

The Capital Region has a population slightly over 1 million residents. The 11 parishes exhibit significant variations in population. The region has a dispersed development pattern, with most current population growth and development occurring in suburban parishes. Ascension and Livingston Parishes especially have experienced the highest rates of population growth and have also become significant centers of job growth. Urban population, in Baton Rouge and East Baton Rouge parish, has remained steady, though the city continues to be the region's main job center.

In public hearings for the MOVE 2042 metropolitan transportation plan, many participants expressed preference for dispersed, suburban, development. The expanding development footprint lengthens worker commutes and increases the cost of providing public services and infrastructure. The Capital Region exhibits a definite Urban-Rural divide, with rural parishes losing both population and jobs. This divide is also reflected in significant Median

Household Income disparities across the various parishes.

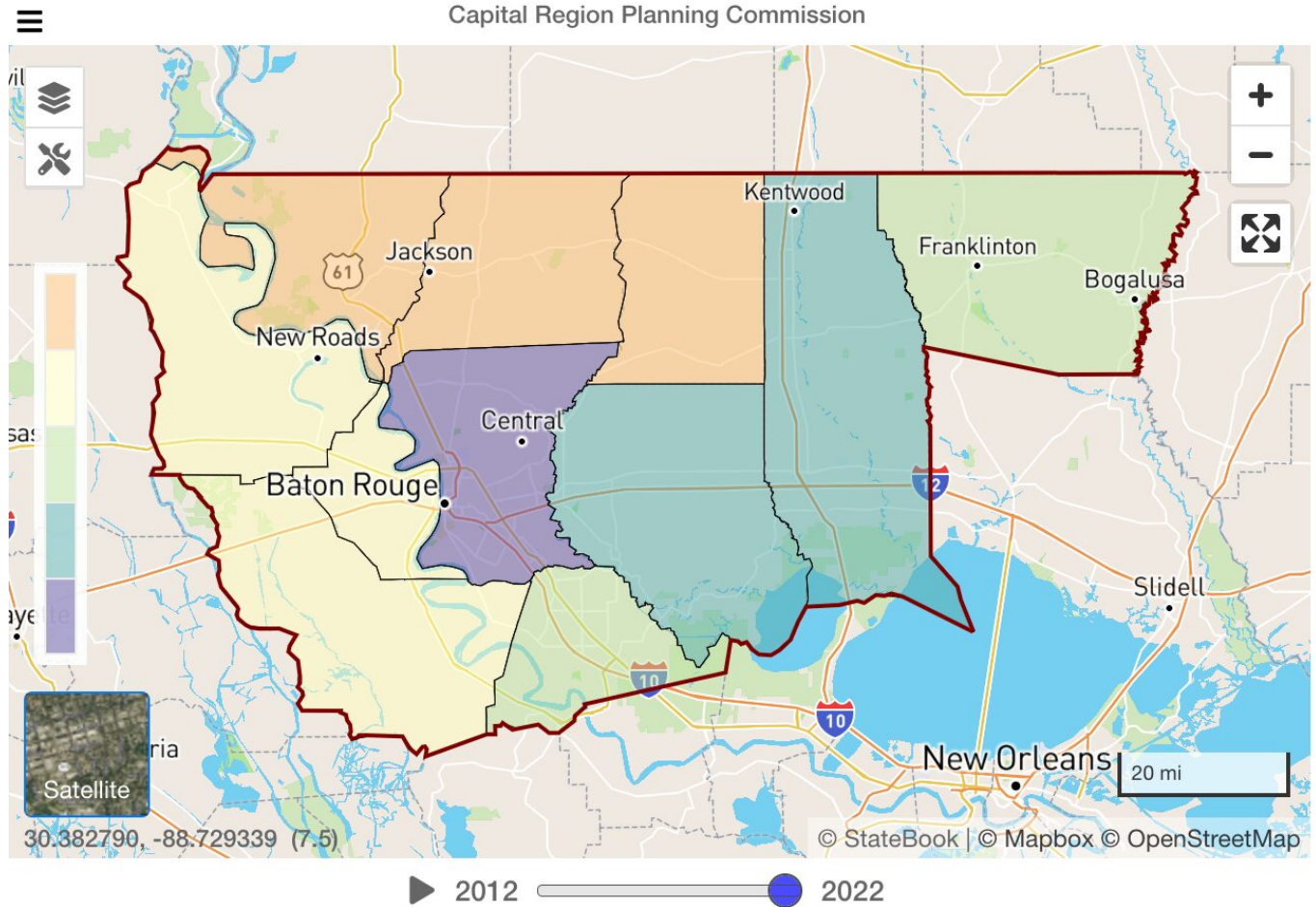
Topics Overview ▾ **Views** Overview - Map ▾ -

Geographies Capital Region Planning Commission ▾ **Categories** Total Population ▾

Metrics Value ▾ **Sources** ACS 5-year data ▾ [Configure](#)

Overview by County: Total Population: 2022

Capital Region Planning Commission



Displayed intervals are based on data from the selected period only.

WHERE WE WORK

Lorem ipsum dolor sit amet, consectetur adipiscing elit, sed do eiusmod tempor incididunt ut labore et dolore magna aliqua. Ut enim ad minim veniam, quis nostrud exercitation ullamco laboris nisi ut aliquip ex ea commodo consequat. Duis aute irure dolor in reprehenderit in voluptate velit esse cillum dolore eu fugiat nulla pariatur. Excepteur sint occaecat cupidatat non proident, sunt in culpa qui officia deserunt mollit anim id est laborum.

Lorem ipsum dolor sit amet, consectetur adipiscing elit, sed do eiusmod tempor incididunt ut labore et dolore magna aliqua. Ut enim ad minim veniam, quis nostrud exercitation ullamco laboris nisi ut aliquip ex ea commodo consequat. Duis aute irure dolor in reprehenderit in voluptate velit esse cillum dolore eu fugiat nulla pariatur. Excepteur sint occaecat cupidatat non proident, sunt in culpa qui officia deserunt mollit anim id est laborum.

Topics
 Overview

Views
 Overview - Map

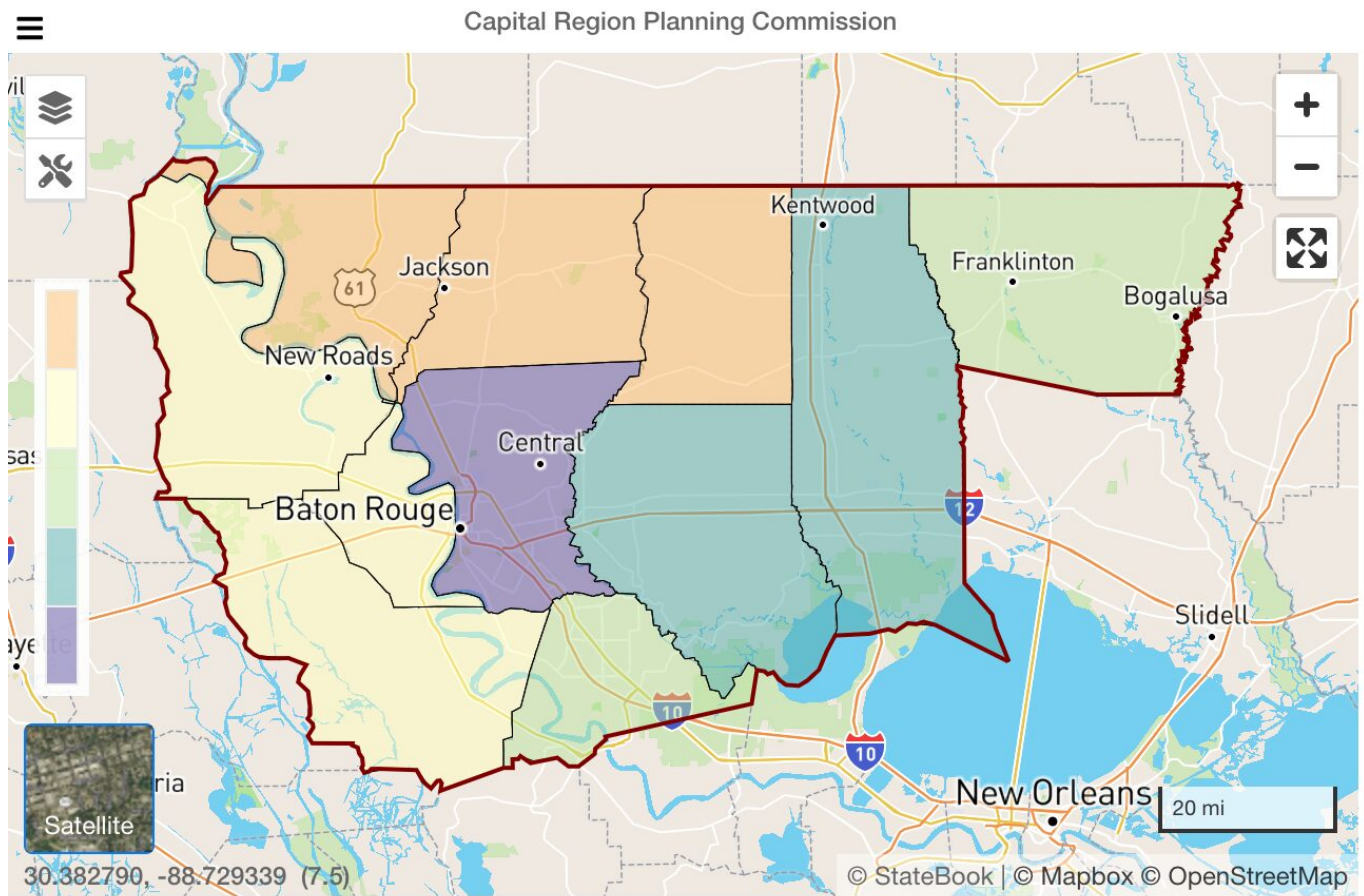
Geographies
 Capital Region Planning Commission

Categories
 Total Population

Metrics
 Value

Sources
 ACS 5-year data

Overview by County: Total Population: 2022



Displayed intervals are based on data from the selected period only.

US Census, ACS 5-Yr

Powered by StateBook

Lorem ipsum dolor sit amet, consectetur adipiscing elit, sed do eiusmod tempor incididunt ut labore et dolore magna aliqua. Ut enim ad minim veniam, quis nostrud exercitation ullamco laboris nisi ut aliquip ex ea commodo consequat. Duis aute irure dolor in

reprehenderit in voluptate velit esse cillum dolore eu fugiat nulla pariatur. Excepteur sint occaecat cupidatat non proident, sunt in culpa qui officia deserunt mollit anim id est laborum.

LOCATIONS OF JOBS & HOUSING

Lorem ipsum dolor sit amet, consectetur adipiscing elit, sed do eiusmod tempor incididunt ut labore et dolore magna aliqua. Ut enim ad minim veniam, quis nostrud exercitation ullamco laboris nisi ut aliquip ex ea commodo consequat. Duis aute irure dolor in reprehenderit in voluptate velit esse cillum dolore eu fugiat nulla pariatur. Excepteur sint occaecat cupidatat non proident, sunt in culpa qui officia deserunt mollit anim id est laborum.

EMERGING BUSINESS & INDUSTRY CLUSTERS

Lorem ipsum dolor sit amet, consectetur adipiscing elit, sed do eiusmod tempor incididunt ut labore et dolore magna aliqua. Ut enim ad minim veniam, quis nostrud exercitation ullamco laboris nisi ut aliquip ex ea commodo consequat. Duis aute irure dolor in reprehenderit in voluptate velit esse cillum dolore eu fugiat nulla pariatur. Excepteur sint occaecat cupidatat non proident, sunt in culpa qui officia deserunt mollit anim id est laborum.

EXPANDING OUR BASE

- Lorem ipsum dolor sit amet, consectetur adipiscing elit, sed do eiusmod tempor incididunt ut labore et dolore magna aliqua. Ut enim ad minim veniam, quis nostrud exercitation ullamco laboris nisi ut aliquip ex ea commodo consequat. Duis aute irure dolor in reprehenderit in voluptate velit esse cillum dolore eu fugiat nulla pariatur. Excepteur sint occaecat cupidatat non proident, sunt in culpa qui officia deserunt mollit anim id est laborum. Threatens the integrity of the Great Lakes-St. Lawrence shipping route.

Lorem ipsum dolor sit amet, consectetur adipiscing elit, sed do eiusmod tempor incididunt

ut labore et dolore magna aliqua. Ut enim ad minim veniam, quis nostrud exercitation ullamco laboris nisi ut aliquip ex ea commodo consequat. Duis aute irure dolor in reprehenderit in voluptate velit esse cillum dolore eu fugiat nulla pariatur. Excepteur sint occaecat cupidatat non proident, sunt in culpa qui officia deserunt mollit anim id est laborum.

INFRASTRUCTURE & JOB CENTERS

Lorem ipsum dolor sit amet, consectetur adipiscing elit, sed do eiusmod tempor incididunt ut labore et dolore magna aliqua. Ut enim ad minim veniam, quis nostrud exercitation ullamco laboris nisi ut aliquip ex ea commodo consequat. Duis aute irure dolor in reprehenderit in voluptate velit esse cillum dolore eu fugiat nulla pariatur. Excepteur sint occaecat cupidatat non proident, sunt in culpa qui officia deserunt mollit anim id est laborum.

BROADBAND

Lorem ipsum dolor sit amet, consectetur adipiscing elit, sed do eiusmod tempor incididunt ut labore et dolore magna aliqua. Ut enim ad minim veniam, quis nostrud exercitation ullamco laboris nisi ut aliquip ex ea commodo consequat. Duis aute irure dolor in reprehenderit in voluptate velit esse cillum dolore eu fugiat nulla pariatur. Excepteur sint occaecat cupidatat non proident, sunt in culpa qui officia deserunt mollit anim id est laborum.

- Lorem ipsum dolor sit amet, consectetur adipiscing elit, sed do eiusmod tempor incididunt ut labore et dolore magna aliqua. Ut enim ad minim veniam, quis nostrud exercitation ullamco laboris nisi ut aliquip ex ea commodo consequat. Duis aute irure dolor in reprehenderit in voluptate velit esse cillum dolore eu fugiat nulla pariatur. Excepteur sint occaecat cupidatat non proident, sunt in culpa qui officia deserunt mollit anim id est laborum.